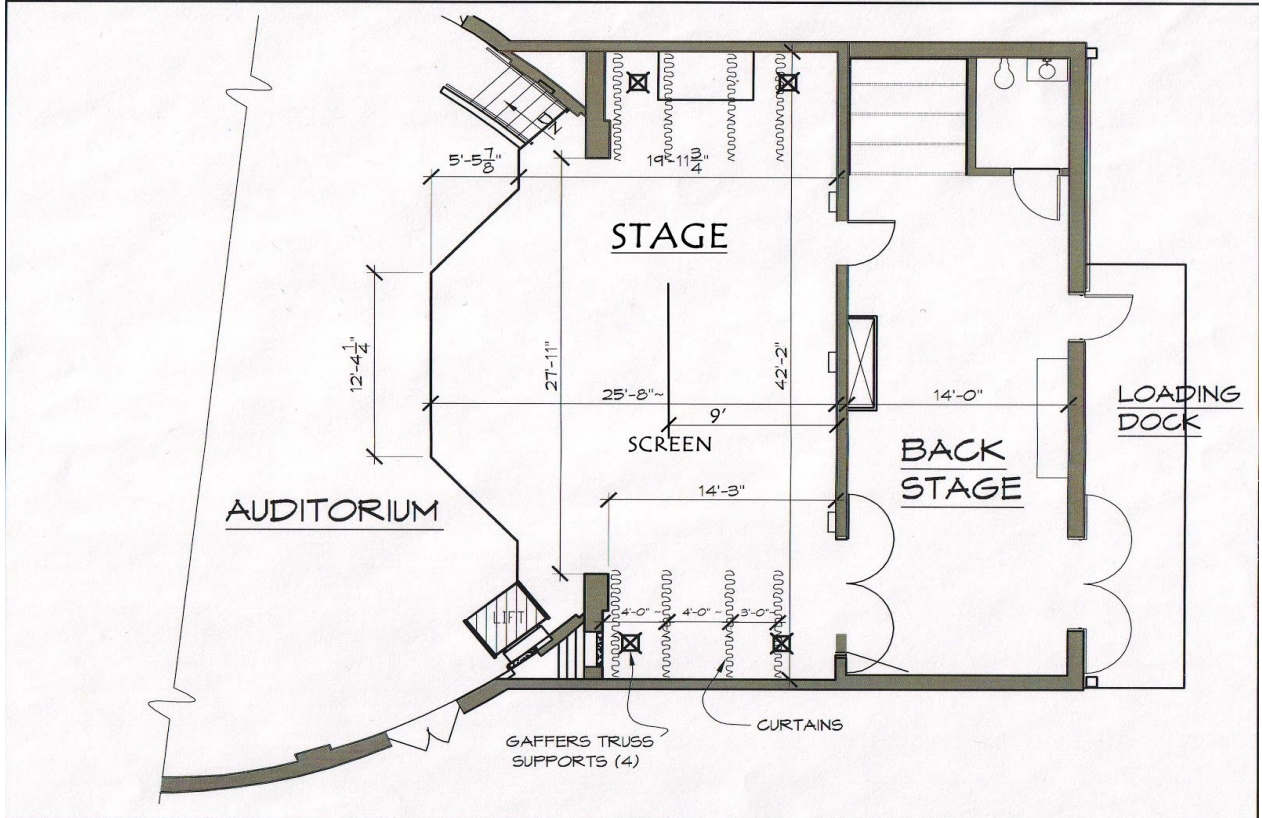


Carroll County Arts Council Theatre Technology Specifications

Table of Contents

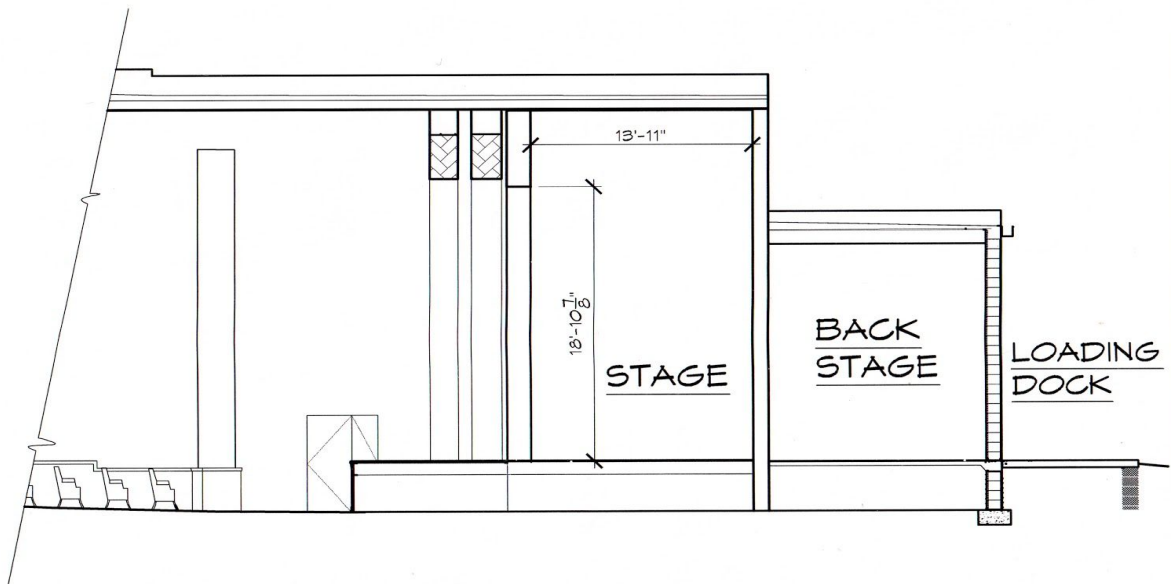
Stage Diagram Top View.....	2
Stage Diagram Side View.....	2
Softgoods.....	3
Lighting Specifications.....	3
Lighting Plot.....	4
Audio Specifications.....	5
Audio Output Flow.....	6
Video Specification.....	7
Floor Edison Power.....	7
Backstage.....	7
Headset.....	7
Load-in.....	7



STAGE PLAN

CARROLL
Arts Center

91 West Main Street
Westminster, MD 21157



SECTION THROUGH STAGE

CARROLL
Arts Center

91 West Main Street
Westminster, MD 21157

Softgoods

Upstage white cyclorama static hung

Upstage full black curtain on traveler (center reveal)

Downstage set of legs static hung (center reveal)

Downstage set of legs on traveler (center reveal)

Downstage grand curtains on traveler (center reveal)

Lighting Specifications

Console: Pathway Cognito Version 9.25.14

Inventory

Type	Locations	Number
Spectra Cyc	Downstage of Cyc	5
SL PAR 155 zoom RGBW LED Luminaire	7- on stage 1- FoH	8
Altman Fresnel	Onstage	19
Altman ERS (ellipsoidal)	FoH	24
Ellipsoidal	Onstage	4
Followspot: Lycian Model 1206	Lighting Booth	2
Altman R40 borderlight (striplight)- 3 circuit	Unhung	3
Various gobos		
Gel in many colors		

Circuit locations:12 channels FoH all doubled. 6 channels at front of apron:3 SL and 3 SR.

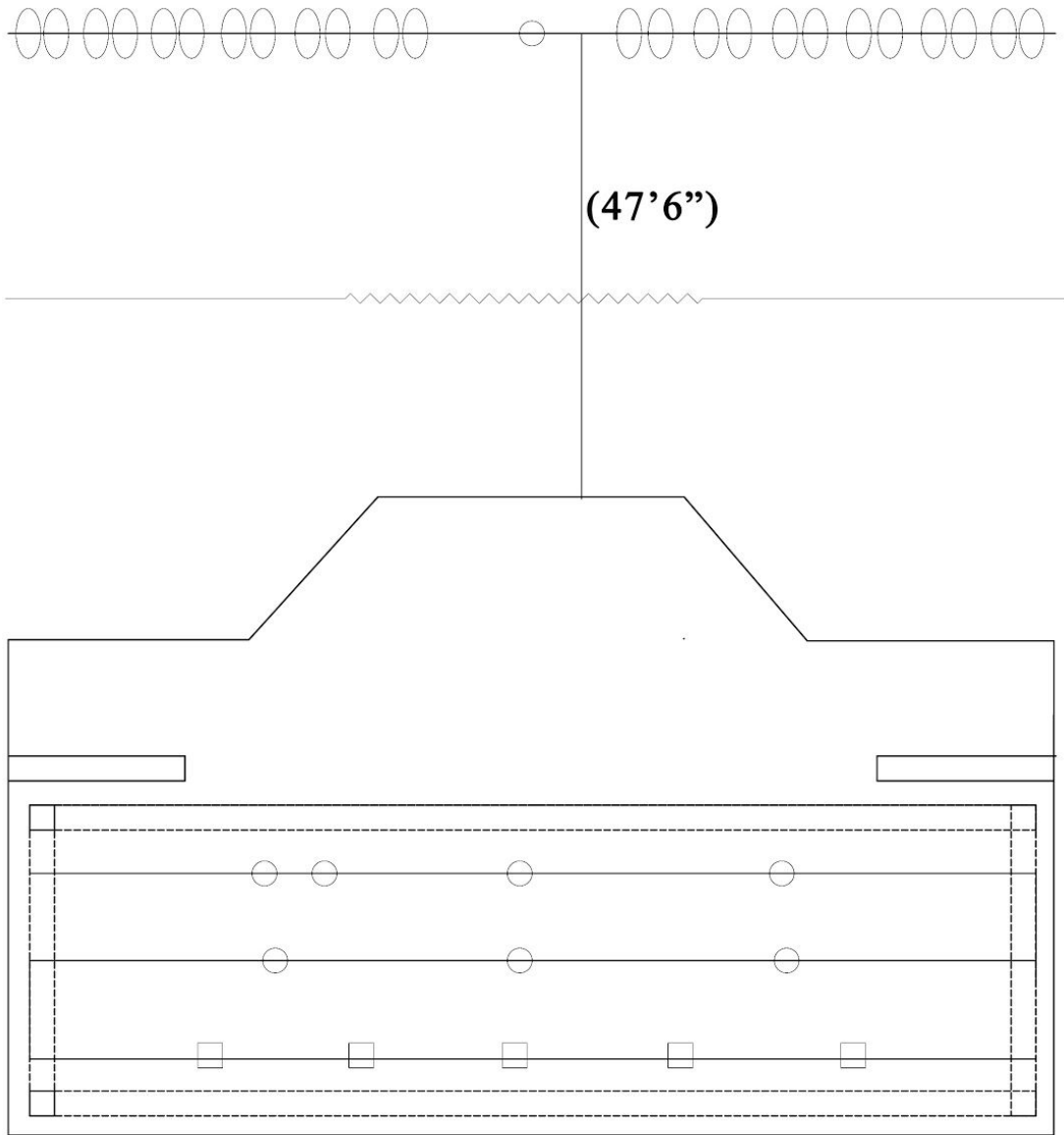
DMX ports: In lighting booth and in greenroom.

Instrument Key

○ ERS

○ SL Par 150

□ Spectra Cyc



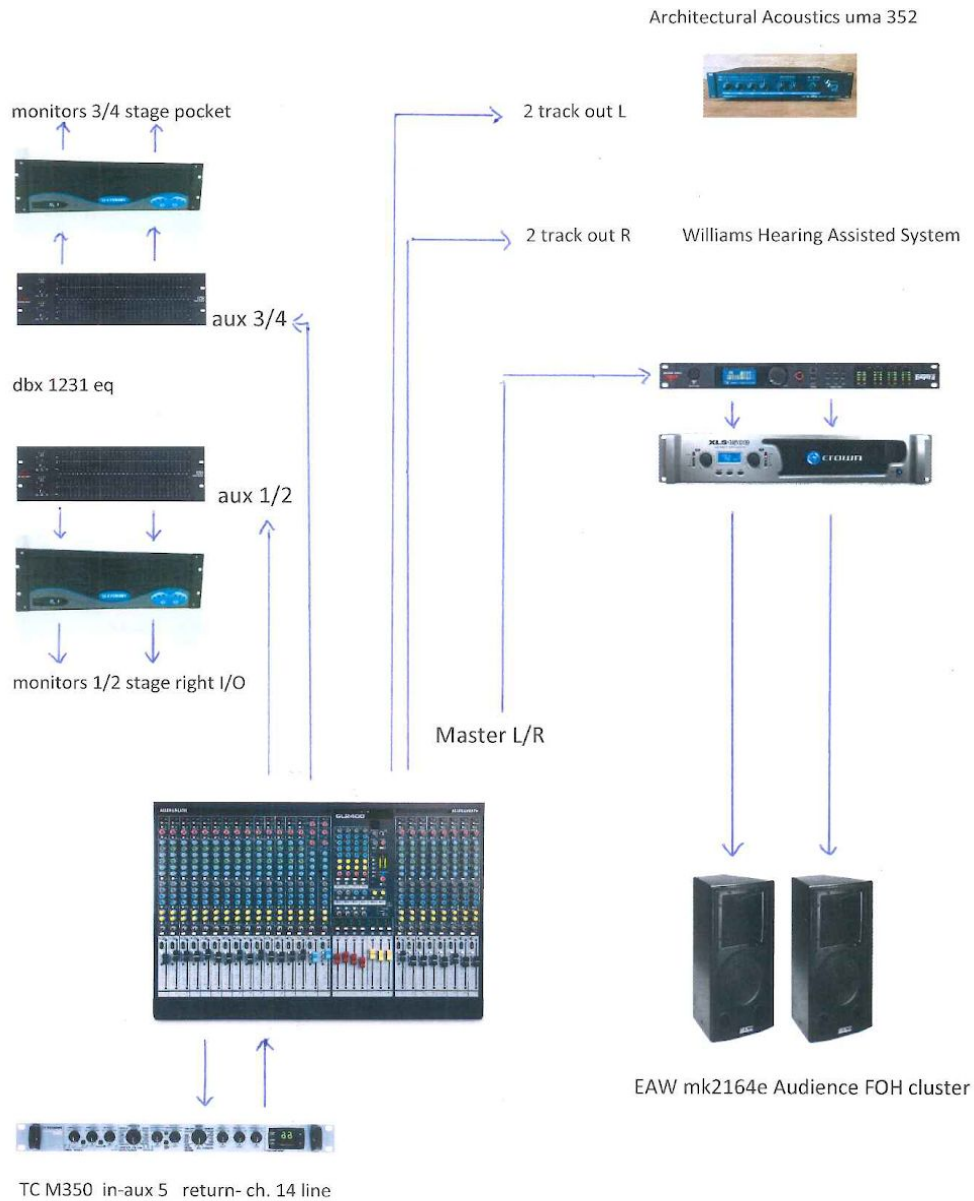
Audio Specifications

Console: Allen GL2400-24 24-Input 4-Buss Live
Inventory

Equipment	Type	Number
Wireless Microphone	e835	2
Floor Mics	PCC 160	2
Shotgun Mics	SGM-1X	2
Cardioid condenser mic	P170	1
Micromic	C430	2
Large-diaphragm condenser mic	AT4040	1
Dynamic vocal mic	SM58	8
Supercardioid Dynamic vocal mic	SM58 beta	2
Supercardioid Dynamic mic	Beta57	4
Dynamic Instrument mic	SM57	3
Dynamic mic	MB 3K	1
Effect and Reverb processor	TC Electronics M-350	1
Dual Channel 31-band Equalizer	dbx 1231	1
Complete Loudspeaker Management system	dbx Driverack PA2	2
Monitors (movable)	EAW SM109z	4
Speakers hung in cluster above audience	EAW MK2164e	2
Various DMX cable		
Various XLR cable		
Various Speakon cable		
Various mic clips		
Various mic stands		

Monitor ports: 2 SR box behind the grand curtain and 2 in stage box center stage.
 XLR ports: 20 SR behind the grand curtain and 4 repeated numbers in stage box center stage.
 Tie lines: 8 SR box behind grand, 4 male and 4 female.
 Computer outputs onstage: 1 VGA and 1 AUX in SR box behind grand curtain.

Audio Output Flow:



Video Specification

Screen: Fixed position midstage 16' 8" from front of stage. 18' x 10'

Projector: Vivitek DU8090z. Fixed position from behind the audience.

Floor Edison Power

4 plugs in front of apron(2 either side), 6 floor jacks, 6 along US back wall, and 2 SL wall.

These are divided between two 20 amp circuits. Apron and floor plugs on breaker 17 and backstage plugs on breaker 7.

Backstage

Greenroom with a counter and mirror and a single bathroom.

Headset

Clear-Com intercom system power at sound booth. 2-Channel main station. Headset locations are in the lighting booth, sound table, SL, and SR.

Load-in

Loading dock(~17" off of ground) with bay doors (118" x 94") to greenroom with a second set that go onto the stage. No ramp to loading dock.